



SAHEJ
SOLITAIRE

— The Gem of Civil Township —



A photograph of a family of four—a man, a woman, and two children—smiling and posing in front of a house. The man is standing on the right, wearing a blue denim shirt. The woman is standing behind the children on the left, wearing a pink button-down shirt over a white top. A young boy is sitting in the front left, wearing a blue t-shirt. A young girl is sitting in the front right, wearing a yellow and white striped t-shirt. The photo is framed by a white border with clipped corners. The text "PRECIOUS PLACE TO OWN" is overlaid on the left side of the image.

PRECIOUS
PLACE TO OWN



CARAT

it's the carat that affects the size and price of a diamond. Similarly, in real estate, there are many factors that determine the value of a project. Primarily what enhances the value of the land are the location, planning, developer and amenities. **Sahej Solitaire**, at the prime location it has been superbly planned keeping in mind the lifestyle and essential amenities required for a comfortable living. Considering the advantages of the place it is most sought after and desirable place to plan a home of your wishes.



COLOUR

Sahej Solitaire is truly a heaven on earth. Beautifully landscaped with variety of trees, exotic plants and carpet of greens, Sahej Solitaire offers real pleasure of living in lap of nature. Here enough open space is left so that you can lead a peaceful life, being in the prime location of the city.



**BLESSED WITH
NATURAL GREEN**



**PROMISING A
CRYSTAL CLEAR
FUTURE**

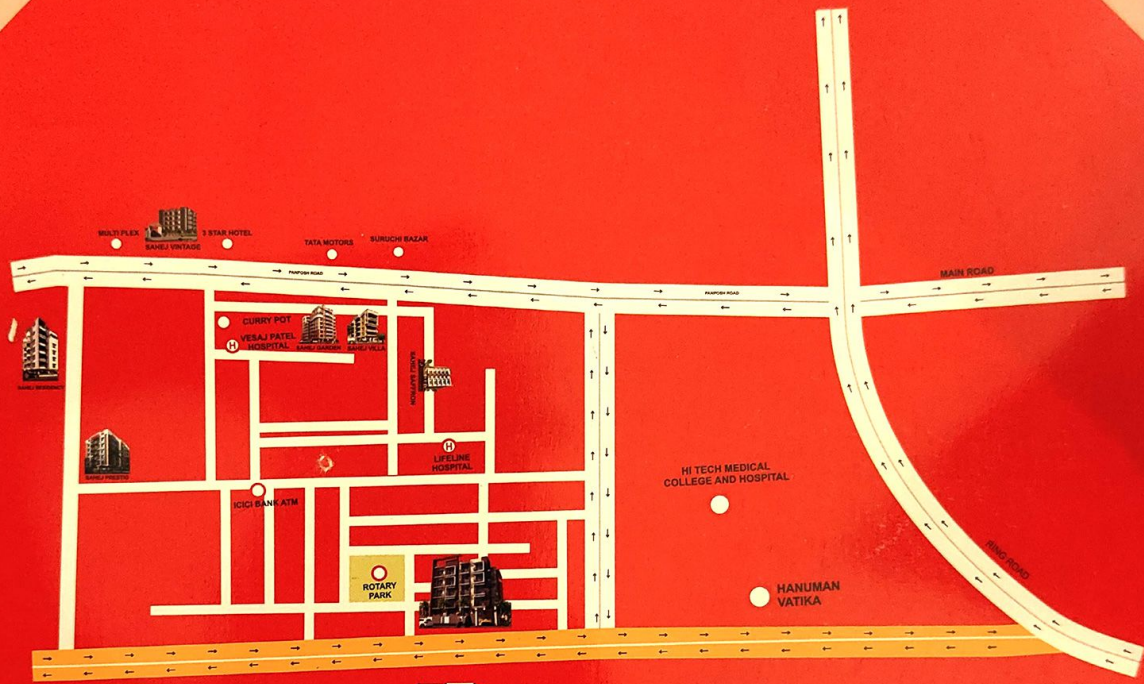



Clearer the better. **Sahej Solitaire** ensures high grade clarity in all the promises. The positioning of the project on the most prime location of **Sahej Solitaire** is the biggest assurance of the multi folded raise in your investment here. All the major development and big openings are coming near and around the project.





- Structure : RCC frame with superior quality cement-concrete finish walls in conventional brickwork with cement plaster & plaster of Paris.
- Lobby : Granite finish with kota stone in staircase.
- Flooring : Vitrified tiles in bedrooms, living and dining.
- Doors : Decorative main flush door wooden frames and flush doors with veneer finish hardware fittings of reputed brand.
- Windows : Powder-coated aluminium windows with 4mm tinted glass
- Sanitary : Chrome plated fittings of best quality
- Kitchen : Platform made of granite with stainless steel sink, Tiles upto 2 ft above kitchen counter anti-skid tiles for floor.
- Toilet : Anti-skid tiles for floor upto door height hot & cold water in shower & high quality CP fittings .
- Provision : Exhaust fan point in kitchen and toilet.
- Electrical : Concealed electrical wiring/ adequate power points. Quality earthing for all electrochemical gadgets.
- Landscaping : Proper hard scape and soft scape to beautify the compound.




**SAHEJ
SOLITAIRE**
— The Gem of Civil Township —



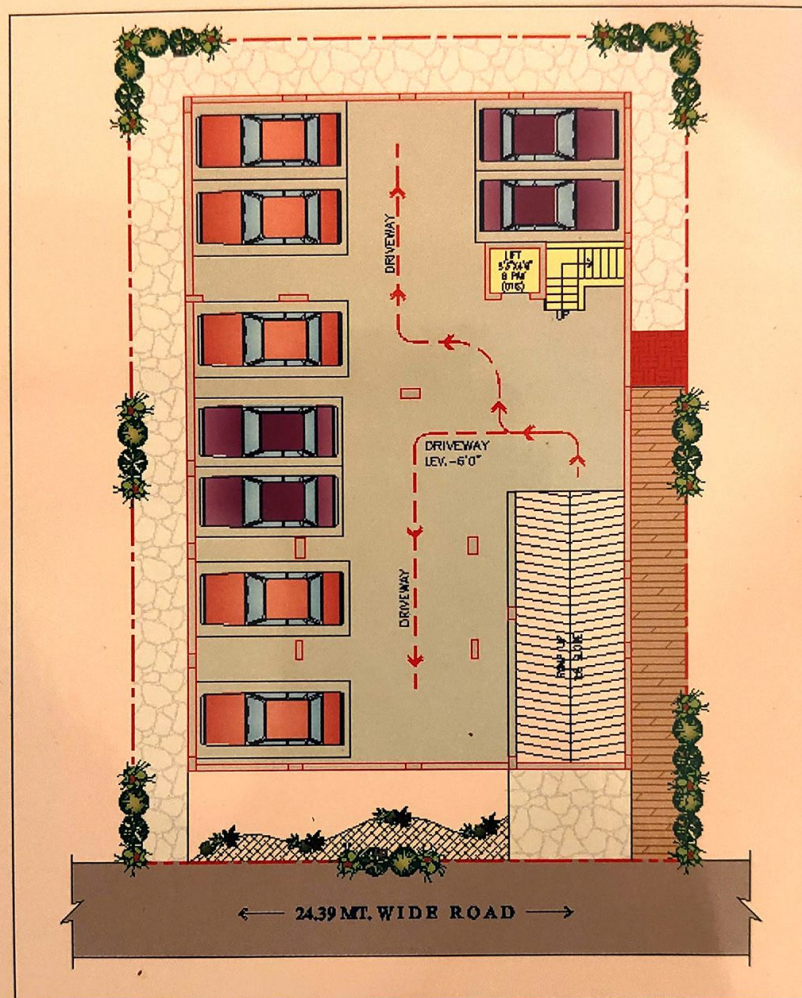


Realtech Group commenced operations in 2002, and over the last two decades has evolved into a brand that is synonymous with Innovation, Quality, Trust and Customer Satisfaction.

Head quartered in Rourkela, Realtech Group has a network across Western Odisha, Bhubaneswar as well, Realtech Group's portfolio includes Residential, Retail and Commercial.

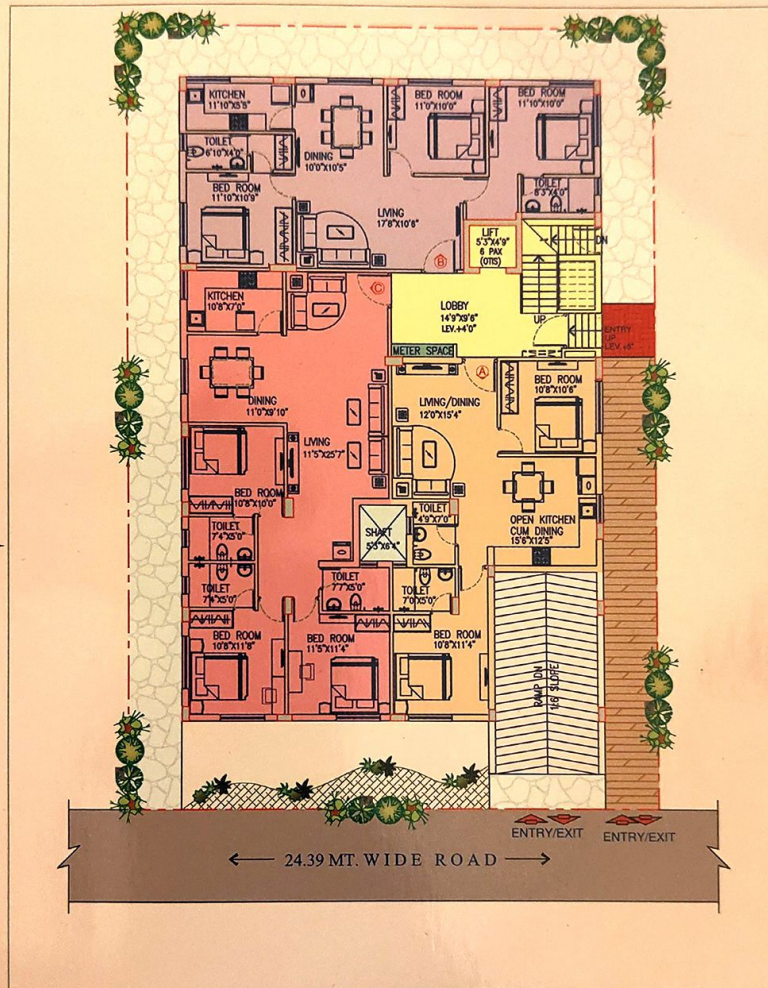
With over 10 million square feet of developed real estate, across 20 projects, Realtech Group has emerged as one of Odisha's leading property developers, and is constantly setting new benchmarks in the real estate industry.

BASEMENT PLAN



Ground Floor Plan

FLAT - A, B & C

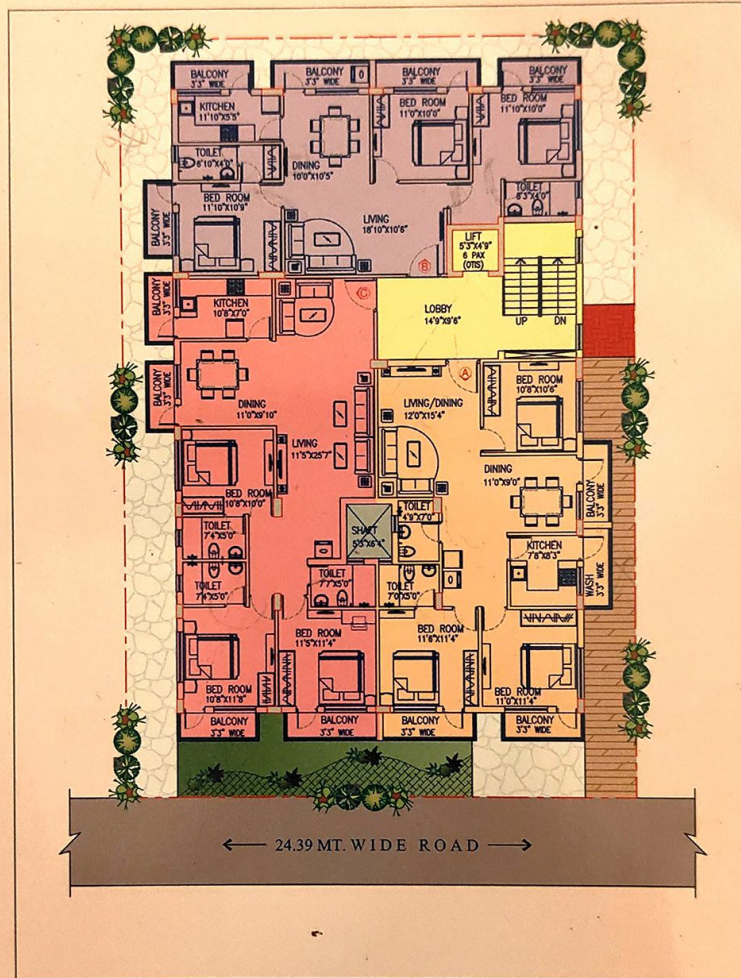


Flat	Saleable area in squar feet	Type
A	957	2 BHK
B	1210	3 BHK
C	1490	3 BHK

Typical Floor Plan (Option -1)

1st to 4th Flore

FLAT - A, B & C

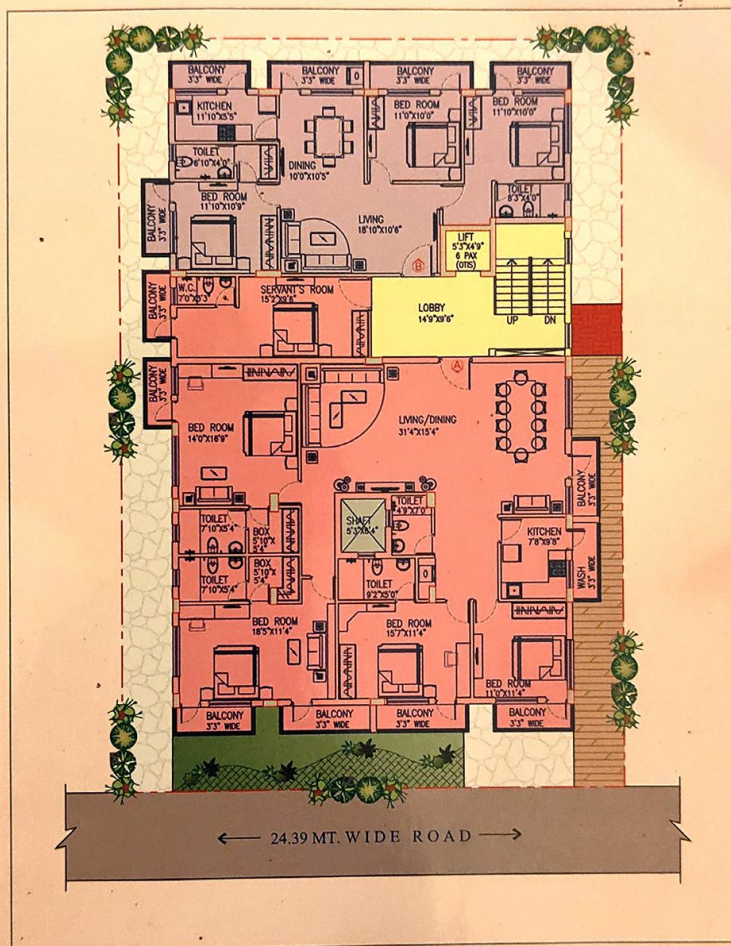


Flat	Saleable area in sugar feet	Type
A	1410	3 BHK
B	1425	3 BHK
C	1650	3 BHK

Typical Floor Plan (Option -2)

1st to 4th Flore

FLAT - A & B



Flat	Saleable area in suar feet	Type
A	3050	4 BHK
B	1425	3 BHK

Gems

Sahej
Enclave

Sahej
Residency

sahej garden

Sahej
Plaza

Sahej success

Sahej Prestige
Luxury Has a New Home

Sahej
Villa

SAHEJ Lagoon

SAHEJ DEEP
THE CROSSROAD
WHERE LIFE MEETS LIFESTYLE

Sahej
Green

Saffron

Sahej Valley

SAHEJ
Avenue
SUNDARGARH

Sahej
Vintage



CHEST

Strategically located at Civil Township main road yet connected amidst greenery in front so that you have all the advantages of urban life with sufficient open space. Being near to Hanuman Vatika, which is a nationally famous pilgrim place, the location of **Sahej Solitaire** is just perfect. With the ample available public transport, traveling to any part of the city will be a jiffy. Surrounded by high profile locality and top class Hospitals, Hotels, Shopping malls, the locale of Sahej Solitaire is already enriched. With daily-need markets, you get everything at hand. Sahej Solitaire has all the elements that ensure comfortable living.





REAL TECH GROUP
BUILDING DREAMS, TO REALITY

SAHEJ REALCON PVT. LTD.

1st floor Nanda Bhawan, Main Road, Rourkela

Phone : 0661 - 6054321. **Mobile:** 9776969991 / 9776969992 / 9776969993

Email : info@realtechgroup.net, director@realtechgroup.net, Marketing@realtechgroup.net

Website: www.realtechgroup.net

Architect-1

Ar. Sameer Qureshi (B. Arch)

Architect-2

Ar. A. Basu (B. Arch)

1st floor Nanda Bhawan, Main Road, Rourkela.

Email : architect@realtechgroup.net. **Phone :** 0661 - 6054321

The brochure is not a legal document. It describe the conceptual plan of Sahej Solitaire.
This developer reserves the right to change/alter the layout plan, elevation, facilities and specifications.